

GEORGE BRAQUE

BY: JACKSON KOONTS



BACKGROUND INFORMATION

- **BORN ON MAY 13, 1882 IN ARGENTEUIL, FRANCE**
- **DIED ON AUGUST 31, 1963 IN PARIS, FRANCE**
- **WORKED FROM 1900-1963**
- **FOCUSED ON STILL LIFE**
- **COLLABORATED WITH PICASSO OFTEN**

CUBISM

- **GEORGE BRAQUE AND PABLO PICASSO STARTED THE IDEA OF CUBISM**
- **STARTED AROUND 1907**
- **CUBISM IS AN ART STYLE WHERE A SINGLE VIEWPOINT WAS ABANDONED AND USE WAS MADE OF SIMPLE GEOMETRIC SHAPES, INTERLOCKING PLANES, AND, LATER, COLLAGE.**

ART STYLE

- **GEORGE BRAQUE WAS AT THE FOREFRONT OF CUBISM**
- **FOCUSED ON STILL LIFE**
- **WORKED FROM 1900-1963**
- **MOST FAMOUS PAINTINGS INCLUDE BOTTLE AND FISHES, THE PORTUGUESE, AND STILL LIFE WITH PLAYING CARDS**



ART STYLE CONTINUED

- **EVEN THOUGH HE WAS MOSTLY CUBIST HE ALSO DID WORK WITH FAUVISM**
- **HIS PAINTING STYLE CHANGED THROUGHOUT THE YEARS AS THE WORLD AROUND HIM CHANGED AS WELL**
- **ALONG SIDE PABLO PICASSO, HE REALLY CHANGED THE WAY THE WORLD LOOKED AT ART DURING THIS TIME**

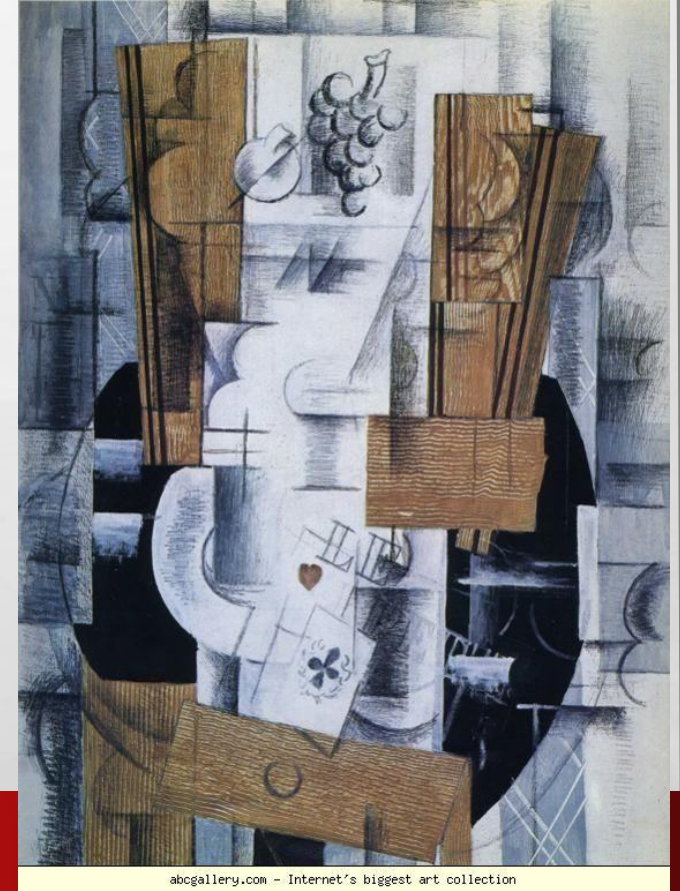
BOTTLE AND FISHES

- **1910-1912**
- **OIL PAINT ON CANVAS**
- **ORIGINAL TITLE WAS BOUTEILLE ET POISONS**
- **THE PICTURE IS VERY MODERN YOU CAN TELL THAT THERE BOTTLES IN THERE, BUT IT IS HARD TO TELL WITH THE FISH**



STILL LIFE PLAYING WITH CARDS

- **1913**
- **OIL ON CANVAS**
- **IT IS ALSO MODERN WITH A FEW PLAYING CARDS AND GRAPES AND WHAT SEEMS LIKE A GLASS AND A TABLE WITH A BLACK SPACE AROUND IT**



BIBLIOGRAPHY

- [HTTP://WWW.ABCGALLERY.COM/B/BRAQUE/BRAQUE58.JPG](http://www.abcgallery.com/b/braque/braque58.jpg)
- [HTTP://WWW.TATE.ORG.UK/ART/ARTWORKS/BRAQUE-BOTTLE-AND-FISHES-T00445](http://www.tate.org.uk/art/artworks/braque-bottle-and-fishes-t00445)
- [HTTP://WWW.THEARTSTORY.ORG/ARTIST-BRAQUE-GEORGES.HTM](http://www.theartstory.org/artist-braque-georges.htm)